

**University of Essex  
Student's Union AGM  
2020/21**

**UNIVERSITY OF ESSEX**  

---

**STUDENTS\***  
**UNION**



# Today's Agenda

1. Welcome to the SU AGM
2. Approve Minutes of Previous AGM
3. Meet the Trustee board
4. Ratification of appointed Auditors
5. 2020/21
  - Affiliations
  - Achievements
  - Finances

A decorative graphic on the left side of the slide, consisting of a solid black triangle pointing downwards and a grey diagonal stripe running parallel to its right edge.

Approval of the Previous Minutes

# Meet the Trustees

Barry van Eupen



Lee Rodwell



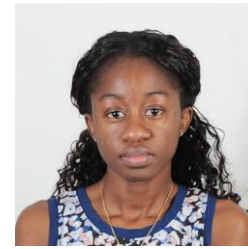
Abdul Abdulsalam



Gerado Palmeri



Verneica Handfield



Chantel le Carpentier



## Sabb team



Samira Monteleone



Callum Broadbent



Isabella Ciuta



Dorothy Akuamo

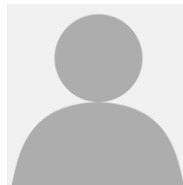


Liv Matthews



Nashwa Alsakka

Lilly- Mae Cameron



# Ratification of the Auditors

Our Auditors were Crowe LLP who were appointed following a tender process between 3 firms by the Audit & Risk Committee in November 2018 for 3 years.

That covered the Audits for 31<sup>st</sup> July 2019, 2020 and 2021

The Trustees have since reappointed Crowe LLP for the next 2 years as we are looking at incorporating the charity.

## **2020/21 Achievements**

- 1. Ranked in the top 15 of SU's for our Academic Representation in the National Students' Survey (NSS).**
- 2. We launched the Umii app, with over 7,700 connections made and 32,000 messages sent by the end of the trial period in May.**
- 3. 1069 volunteering hours delivered in Student volunteering week, ranking us No 1 again. 24,767 hours across the year.**

# 2020/21 Affiliations

## Sports Affiliations 20/21

BUCS Affiliation = £9729.28 to affiliate University to BUCS

Archery = £170 Archery GB

Football = £100 Essex and Suffolk Border Football League (ESBFL)  
Affiliation Fees

Jitsu = £300 The Jitsu Foundation

Lacrosse = £185 English Lacross Association

Rowing = £243.70 British Rowing

## Advice Centre

Membership for UKCISA

## Societies Affiliations 20/21

Amnesty International Society  
affiliated to Amnesty International

Conservatives Society affiliated to  
Conservative Party

ELSA Society affiliated to ELSA UK

Enactus Essex Society affiliated to  
Enactus UK

Essex St John Ambulance Society  
affiliated to St John Ambulance

Labour Society affiliated to Labour  
Party

Liberal Democrat Society affiliated to  
Liberal Democrat Party

TEDx Society affiliated to TEDx

UNICEF Society affiliated to UNICEF

# Finance Summary

- 2020-21 was an exceptionally challenging year. Constant changes to the Government's social distancing guidelines during the first term required a very agile approach to planning both in terms of events and activities as well the allocation of resources and budgets.
- That year was not about making money but about being there for our students and ensuring certain services remained, such as the store
- Full accounts available online
- [www.essestudent.com/agm](http://www.essestudent.com/agm)



# New Trustee's required for 2022/23

Next year we will be looking for  
new Students to join the Trustee  
board and also one new external  
Trustee too

These positions are voluntary  
and anyone interested should  
contact : [cm20983@essex.ac.uk](mailto:cm20983@essex.ac.uk)



This Photo by Unknown Author is licensed under [CC BY-SA](https://creativecommons.org/licenses/by-sa/4.0/)



Any  
Questions?

Thank You